

# Connecticut Precast Corp.

Manufacturers of Concrete Products

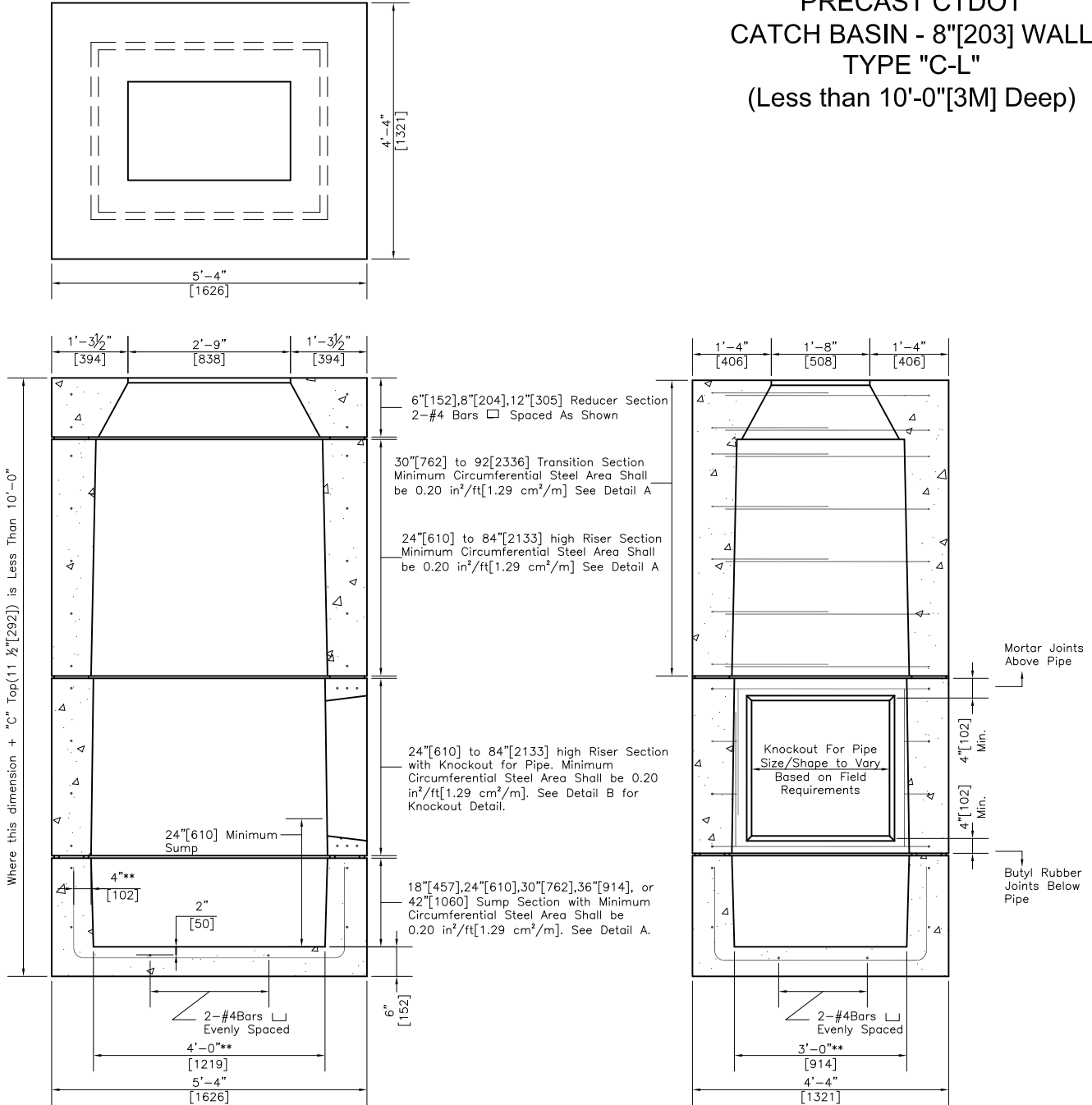
555 Fan Hill Road, Monroe, CT 06468  
Telephone (203) 268-8688 Fax (203) 452-1007

www.ctprecast.com

## Catch Basins

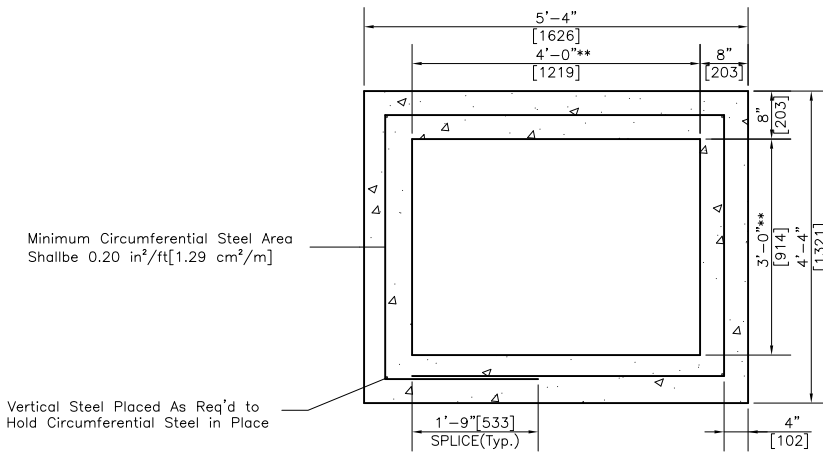
36"x48"[914x1219] STANDARD  
PRECAST CTDOT  
CATCH BASIN - 8"[203] WALL  
TYPE "C-L"  
(Less than 10'-0"[3M] Deep)

Catch Basin  
CTDOT

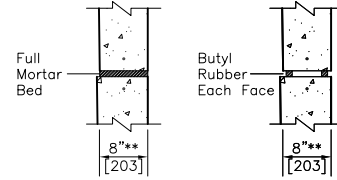


\*\*=Nominal Dimension. Slight variation in dimensions may occur due to tapering for manufacturing purposes.

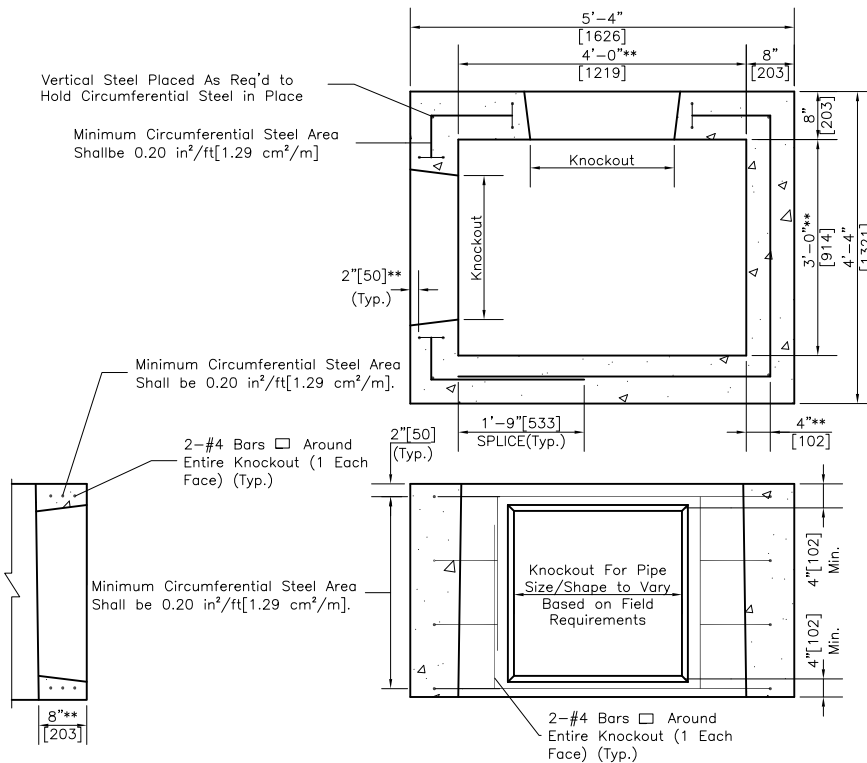
# 36"x48"[914x1219] STANDARD PRECAST CTDOT CATCH BASIN -8"[203] WALL



RISER SECTION (Typ.)



JOINT DETAILS



KNOCKOUT DETAIL

PRODUCT WEIGHTS		
UNIT	HEIGHT (in [mm])	WEIGHT (lbs [kg])
SUMP	18" [457]	4,200 [1,907]
	24" [610]	4,750 [2,157]
	30" [762]	5,300 [2,406]
	36" [914]	5,850 [2,657]
	42" [1060]	6,400 [2,906]
RISER	12" [305]	1,100 [499]
	18" [457]	1,650 [749]
	24" [610]	2,200 [999]
	30" [762]	2,750 [1,249]
	36" [914]	3,300 [1,498]
	42" [1060]	3,850 [1,748]
	48" [1219]	4,400 [1,998]
	60" [1525]	5,500 [2,498]
	72" [1828]	6,600 [2,998]
84" [2133]	7,700 [3,497]	
REDUCER	6" [152]	1,215 [552]
	8" [203]	1,660 [754]
	12" [305]	2,433 [1,105]
TRANSITION	30" [762]	3,860 [1,753]
	36" [914]	4,410 [2,003]
	42" [1060]	4,960 [2,252]
	48" [1219]	5,510 [2,502]
	60" [1525]	6,610 [3,002]
	72" [1828]	7,710 [3,501]
84" [2133]	8,810 [4,001]	
92" [2336]	9,360 [4,251]	

**NOTES:**

- Minimum Concrete Compressive Strength = 4,000PSI [27,580kPa] shall be obtained prior to shipping.
- Product conforms to CTDOT Standard Specification Form 816 and CTDOT Standard Detail HW-507.04.
- Steel reinforcement shall conform to ASTM A615, Grade 60 with a minimum clear cover of 2" [50].
- Product to be used for catch basin where dimension from finished top is less than 10'-0" [3m] deep. This product can be placed on top of 12" [305] wall where catch basin is over 10'-0" [3m] Deep.
- All pipe openings to be closed by Contractor using materials conforming to CTDOT Standard Specification M.08.02.
- There shall be no corner entries in risers. Use Standard Round Catch Basin in lieu of.
- Butyl joint sealant shall conform to ASTM C990 and/or AASHTO M198.
- Knockouts for pipe openings shall be placed at the required location and height for project. There shall be a minimum 4" [102] distance between knockout and bottom or top of riser/transition. Steel reinforcement shall have minimum 2" [50] clear concrete cover. Maximum size of knockout may be govern by height of required riser/transition section.

\*\*=Nominal Dimension. Slight variation in dimensions may occur due to tapering for manufacturing purposes.